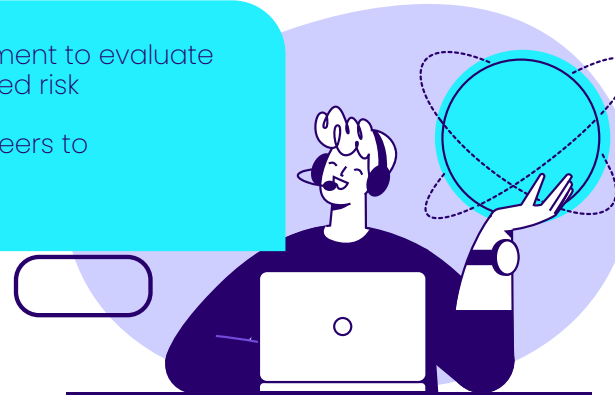


# Managed 365

Enhance security, align with best practice, and reduce costs



- Comprehensive risk and compliance reporting
- Upfront benchmark and remediation in line with Microsoft best practice
- Monthly vCIO engagement to evaluate and remediate identified risk
- Access to skilled engineers to implement changes



## Product Overview

The Microsoft 365 environment has multiple applications and services that require expertise and deep technical knowledge. This can be complicated to understand, difficult to roll-out and mistakes are very costly. In addition, the updating of features and apps requires careful planning. Keeping users safe requires specialist security expertise combined with proactive activities to reduce security threats. These activities are critical but often overlooked.

Although there are many benefits to aligning your business requirements to a subscription service, it is important to firstly ensure that your Microsoft 365 environment is correctly deployed according to industry standards. Ongoing maintenance of the environment becomes critical to ensure your environment is secure and ensuring you are getting the most value from the Microsoft 365 subscription package.

## Features and Benefits

### Professional Services

Adopting 365 requires a shared responsibility model for security, with Microsoft responsible for certain controls and the customer responsible for others. To ensure that a customer's environment is protected, it is important that they enable the correct configuration. As a starting point, our professional services team will conduct an assessment and align configurations to Microsoft recommended best practice.

### Virtual CIO

Even when best practice is implemented, ongoing configuration changes can slowly create unforeseen vulnerabilities. These need regular and ongoing review. On a monthly basis, we deliver a comprehensive operational and risk report across the entire suite. This information is presented by one of our certified vCIO's and where risk exists, remediation is proposed and where necessary, implemented by a qualified engineer. The following key areas are covered:

### **Risk Assessment**

Operational and Configuration risks in Outlook, SharePoint, OneDrive, and Teams together with proposed remediation actions.

### **Azure Active Directory**

Includes Configuration of users and groups, and detailed configuration settings of entities for audit purposes.

### **Microsoft Cloud Security Assessment**

The Microsoft Secure Score is a proprietary security score provided by Microsoft. It is an aggregate of scores provided by implementing various security controls and best practices. The assessment includes a review of the current Microsoft Secure Score including trends over time and Proposed remediation

### **OneDrive**

Overview of the current file and storage requirements for OneDrive which will impact on backup

### **Outlook**

Includes overall trends in mail usage, Active users and unusual spikes in usage that may warrant further investigation

### **SharePoint**

SharePoint sites and usage

### **Configuration Change Report**

List of all changes assessed against the old value

### **Compliance Management**

Insights, recommendations, and links to Security & Compliance reports, including Microsoft Purview Data Loss Prevention reports, labels, email security reports and Defender for Office

**proactive  
activities to  
reduce security  
threats**

**Ongoing  
maintenance  
of the  
environment**

